



## **We make EDI painless for SouthWare users by making it easy to use and affordable!**

With TrueCommerce, all you need to become EDI enabled are SouthWare's Doc Transfer, ImportMate, WorkFlow, ExtendedData and ReportMate modules and a standard Internet connection. We'll provide the rest.

**TrueCommerce**<sup>®</sup>  
We Make EDI Painless

# Easy to use.

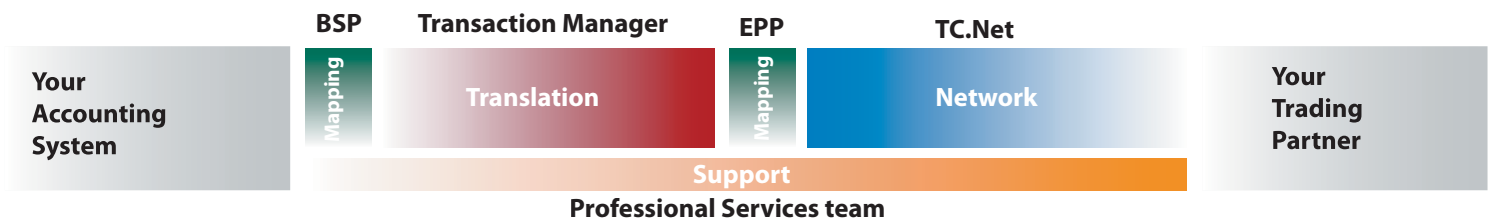
Our unique modular approach enables us to offer a true end-to-end solution that is extremely intuitive to use and unparalleled in scalability. We've taken the complexity out of implementing EDI by providing all four of the components you need to successfully deploy EDI:

**Connectivity** with your trading partner(s) is required to transmit EDI documents, whether directly via the Internet or through a "Value Added Network", or VAN. TC. Net™ is our Internet-based transaction gateway across which your EDI transactions are transmitted, providing connectivity with all of your trading partners. TC.Net is compliant with virtually any connectivity protocol, including AS1/AS2/AS3, FTP and (if required) VAN interconnects.

**Translation Software** is required to convert the raw EDI data into a meaningful format. TrueCommerce Transaction Manager™ is our user-friendly translation software that converts business documents into the ANSI ASC X12 EDI standard. In addition, it converts the data out of the standard into a meaningful format, such as a human-readable business form.

**Data Mapping and Integration** provide the ability to seamlessly import and export information from EDI-based transactions to and from your back-end business or accounting system, as well as to properly format transactions being sent to your trading partners. Electronic Partner Plug-Ins™, or EPPs, are our intelligent software modules that are programmed to format your inbound and outbound transactions so that they match your trading partner's requirements. To add trading partners, you simply add EPPs. Our Business System Plug-In™, or BSP, maps your EDI transactions so that they seamlessly transfer to and from your business or accounting system. You will have one specific BSP for whatever business system you are operating. If you replace your business system, simply swap out your BSP and the rest of your EDI solution remains intact.

**Support** for all of your EDI needs requires a broad range of expertise. An in-depth understanding of the specific implementation requirements of each trading partner is critical, as is a thorough understanding of the issues related to integration and technical aspects of sending and receiving transactions electronically. Because TrueCommerce is an end-to-end solution, we have teams of knowledgeable professionals to support each and every aspect of the entire EDI process.



Since 1995, our mission has been to provide small to mid-tier companies with a comprehensive, end-to-end EDI solution that is simple to use, robust and affordable.

# Affordable.

When it comes to EDI, TrueCommerce delivers unsurpassed value. Rather than requiring you to utilize a combination of expensive third-party providers, we deliver and support your entire EDI solution. This enables us to provide valuable cost-saving benefits that no one else can offer:

- Free, unlimited phone access to our friendly and knowledgeable customer support professionals. Available Monday through Friday, 8:00 a.m. to 7:00 p.m. EST.
- Free trading partner mapping updates! When your trading partner modifies their EDI requirements or implements a new transaction, we'll send you an auto-installing upgrade to the associated Electronic Partner Plug-In™ (EPP) at no charge.
- No hidden network fees! Enjoy substantial savings vs. traditional VAN fees.
- No annual contract or annual maintenance fees! Cancel your TC.Net subscription at any time if not completely satisfied.
- For added functionality, purchase our Electronic Labeling Plug-in™ (ELP) and auto-generate UCC-128 numbers.



**System Requirements:**  
Operating System – Windows® 2000, Windows Server 2003, Windows Server 2008, XP or Vista  
Processor - Minimum 2 GHz  
RAM – Minimum 1 GB  
Minimum free hard disk space - 3 GB (available)  
Broadband Internet Connection  
IIS for Client/Server installation  
Microsoft SQL server Express Edition (provided by TrueCommerce) or Microsoft SQL Server 2005

TrueCommerce customers use our solution to exchange tens of millions of EDI transactions annually within a variety of industries, ranging from retail and banking, to healthcare and government.

# Our Electronic Labeling Plug-in is the UCC-128 Labeling solution you need!

You can auto-generate UCC-128 numbers within the ASN and print trading partner approved UCC-128 labels!

No more having to individually enter each UCC-128 number!

Customizing each UCC-128 number by trading partner is as simple as entering basic data in just three fields...one time! The check digit is automatically calculated.

Ship to the distribution center or your customer's store.

The ELP references the "ship to" code to automatically populate the label with the correct address.

UCC-128 number is automatically serialized

After the UCC-128 number has been set up in the EPP, it will automatically be entered into the ASN and serialized.

Labels, with one button click...

After the ASN's have been created, select the ASN's that are shipping and click the Label Button.

TrueCommerce Transaction Manager™ automatically populates the various UCC-128 trading partner templates with the appropriate data from the ASN before sending the UCC-128 templates to the printer where they are automatically printed out.

**TrueCommerce Transaction Manager - Label Setup**

UCC-128 Lookups

Next UCC # [00] 0 0 00000000000025 3

Extension [0]

Company # [0]

Next Serial # [25]

Note: The combined entries for Company # and Next Serial # cannot exceed 16 characters.

Use UCC-128 Autocreate

---

**TrueCommerce Transaction Manager - Outbox - 9 - Ship Notice/Manifest - Standard**

PO #	Invoice #	Name	Store #
JS82352	123456	Site 1	1054

UPC #	EAN #	Model #	Description	Quantity	UOM
053332019105	2165487933	254896	Widget A	8	Each

UCC-128	# of Items Per Carton	Vendor #	Facility Code
00000000000000000147	2	11111111111	025
00000000000000000154	2		1
00000000000000000161	2		1

---

**TrueCommerce Transaction Manager - Transactions**

Trading Partner	Docum	Docume
Bed Bath and Be	Stand-	JS62971
Bed Bath and Be	Stand-	JS64560
Bed Bath and Be	Stand-	JS66477
Bed Bath and Be	Stand-	JS67899
Bed Bath and Be	Stand-	JS68499
Bed Bath and Be	Stand-	JS68998

The transaction list has been retrieved for folder Inbox.

---

**ACME, INC.**

PO Number: ECWE12345678

SKU	DESCRIPTION	QTY
123-4567	SKU DESCRIPTION A	10
123-4568	SKU DESCRIPTION B	1

PO Number: ECWE12345679

SKU	DESCRIPTION	QTY
123-7894	SKU DESCRIPTION C	10
123-8904	SKU DESCRIPTION D	1

PO Number: ECWE12345680

SKU	DESCRIPTION	QTY
123-4567	SKU DESCRIPTION A	10
123-4568	SKU DESCRIPTION B	1

Store Name: EAU CLAIRE WEST      Carton Count: 6

Store: 3011      Vendor Name: Vendor Name

Vendor Number: ABDCE001

SBCC-1R

(00) 1 00 08006 004001204 6



# With TrueCommerce Transaction Manager™ EDI is as simple as e-mail!

TrueCommerce Transaction Manager is our user-friendly translation software. Transaction Manager is a software application that is simple and intuitive to use, requiring only basic PC skills to implement. It offers robust functionality and unparalleled scalability.

## Transaction Manager's features include:

- Supports any X12 transaction
  - Automatically highlights missing, mandatory information
  - Automatically sends acknowledgments when transactions are received
  - Includes item ID translation table and default information lookup table
  - Multiple store lists
  - Automatic conversions of charges and allowances
  - Support for multiple GL Account setups
  - Advance Ship Notice (ASN) module included
- (Use in conjunction with ELP and print barcode labels and auto-generate UCC-128 numbers. Each sold separately.)

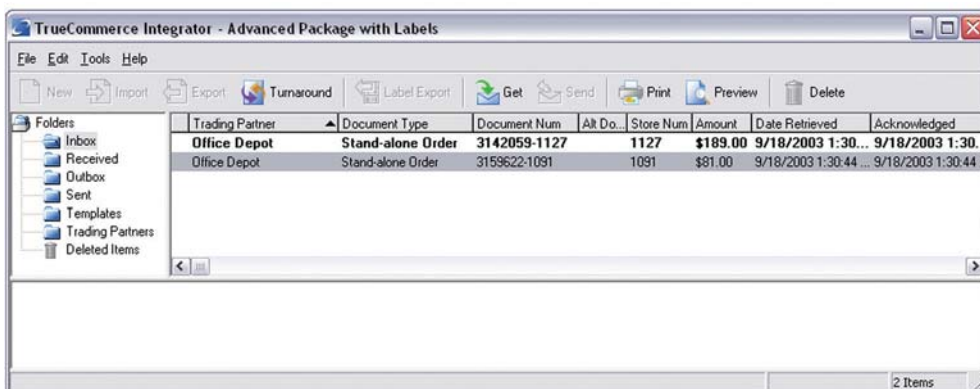
Transaction Manager enables the user to send and receive EDI transactions with a trading partner via TC.Net™. Transactions are processed through a user-friendly interface, similar to email. After launching Transaction Manager, a user is able to download EDI transactions from TC.Net by clicking the "get transactions" button. Transaction Manager translates data from the incoming EDI format that it receives into a traditional purchase order format. The purchase order may be viewed on the screen,

printed to paper, and/or exported to the user's accounting system.

Transaction Manager is able to export incoming transactions to a format that a user's accounting or business system can understand via the included Business System Plug-in™ (BSP). It is also able to import outgoing transactions from the accounting or business system. This integration capability reduces the need for re-keying data, resulting in a more

streamlined business process and fewer mistakes. Transaction Manager uses a specific Electronic Partner Plug-in™ (EPP), or mapping module for each trading partner. The data received from, and sent to the trading partner is formatted by the EPP to conform to the trading partner's specifications. All updates to new versions of TrueCommerce Transaction Manager provided at no charge.

## The intuitive user interface features point-and-click functionality similar to e-mail.



**System Requirements:**  
**Operating System** – Windows® 2000, XP, Vista, Server 2003 and Server 2008  
**Processor** - Minimum 2 GHz  
**RAM** – Minimum 1 GB  
**Minimum free hard disk space** - 3 GB  
IIS for Client/Server installation  
Microsoft SQL server Express Edition (provided by TrueCommerce) or Microsoft SQL Server 2005



Our solution is uniquely designed to make it simple and easy to implement EDI, and even easier to afford. That's why only TrueCommerce can provide all of the following benefits:

#### Single Source Solution

- Everything you need to successfully implement EDI from one source!
  - translation software
  - accounting system integration
  - data mapping
  - network services
  - technical support

#### Easy to Use

- As intuitive to use as email.
- Point-and-click functionality.
- Requires little or no training to begin using.
- Includes a step-by-step user's guide that's written in easy to understand language and incorporates screen captures to guide you through most tasks.
- Backed by free support!

#### Works with Any Trading Partner

- Including those requiring the use of AS2 or a specific Value Added Network (VAN).

#### Robust Functionality

- Supports any ANSI ASC X12 transaction.
- Automatically highlights mandatory information that's missing.
- Automatically sends and receives acknowledgments to confirm when transactions are received.
- Includes Item ID translation tables and default information lookup tables to reduce or eliminate manual data entry.
- Can be configured to accommodate virtually any GL account structure.

#### Generate Advance Ship Notices

- ASN module included at no additional charge!
- Barcode printing module available to automate the generation of UCC-128 labels.

#### Affordable!

- Become EDI enabled with one trading partner for as little as \$795.
- Add trading partners for as little as \$300!
- Monthly network pricing starting at just \$49.95!
- Annual network savings of 30% to 50% compared to EDI solutions offering comparable functionality.
  - No annual subscription or maintenance fees!
  - No annual contract required or early termination fees!
  - No AS2 license fees, mailbox fees, peak hour surcharges, delimiter conversion fees or other hidden service fees.
  - Free unlimited support!
  - Free software updates! If your trading partner changes a specification or adds a transaction, we'll update your data mapping at no charge!

**True Commerce, Inc.**  
12330 Perry Highway, Suite 200  
Wexford, PA 15090  
p: 724.940.5520 or  
toll-free at 1.888.EDI.True  
f: 412.586.2240  
[www.truecommerce.com](http://www.truecommerce.com)

**TrueCommerce**<sup>®</sup>  
We Make EDI Painless

